

Datasheet



Mouse mAb to **CD7**
Clone **124-1D1**
Isotype **IgG1-κ**

Source

A BALB/c mouse was immunized with human leukocytes.
Fusion partner: NS-1.

Specifications

124-1D1 recognizes 40 kDa CD7, a member of the immunoglobulin gene superfamily and expressed on the majority of immature and mature T-lymphocytes, and T-cell leukemia. It is also found on natural killer cells, a small subpopulation of normal B-cells and on malignant B-cells. CD7 associates directly with phosphoinositol and tyrosine phosphorylation. 124-1D1 was assigned at the IVth International Workshop.

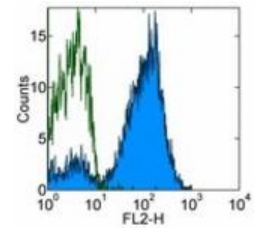


Figure 1: Human PBMC's stained with 124-1D1 (FITC).

Species reactivity

Positive: human.

Applications

Characterization of Leukemia and lymphoma.

Flow cytometry	Frozen sections	Immunofluorescence	Paraffin sections
+	+	+	-

Format

Produced in tissue culture, contains no host Ig. Antibodies are affinity purified and presented in PBS with 0,02% sodium azide.

Stored at 4°C-8°C, shelf life is at least 24 months after purchase.

Dilution advice

- Flow cytometry (0,5-1,0 µg/million cells in 0,1 ml).
- Immunofluorescence (0,5-1,0 µg/ml).
- Immunohistology (1-2 µg/ml for 30-60 minutes at RT; for staining of formalin-fixed tissues no suitable antigen retrieval method is known to date).

Positive control

Jurkat, HUT-78, Molt-4, CEM cells, or human PBL. Lymph node and tonsil.

References

- Knapp W. et al. Leucocyte typing IV, p. 1076, Oxford University Press, Oxford (1989).