

Datasheet



Mouse mAb to **PSA**
Clone **1A7G6B6**
Isotype **IgG1-κ**

Source

A BALB/c mouse was immunized with a p30 enriched preparation of human sperm plasma.
Fusion partner: P3-X63-Ag8.653.

Specifications

1A7G6B6 recognizes PSA as p30 in ELISA. Makes excellent pair with EBS-T-231 for PSA tumor marker tests, including rapid tests.

Species reactivity

Positive: human.

Applications

1A7G6B6 is excellent for PSA tumor marker tests, in combination with EBS-T-231 antibody. It is further used for immunohistochemistry.

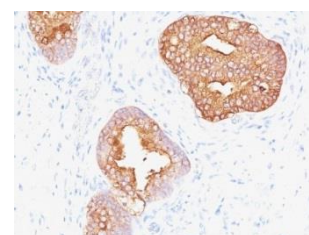


Figure 1: Prostate carcinoma stained with 1A7G6B6 (paraffin)

ELISA	Flow cytometry	Frozen sections	Immunofluorescence	Paraffin sections	Rapid test
+	+	+	+	Citrate	+

Format

Produced in tissue culture, contains no host Ig. Antibodies are affinity purified and presented in PBS with 0,02 % sodium azide.

Stored at 4°C- 8°C, shelf life is at least 24 months after purchase.

Dilution advice

- ELISA (solid phase: 0,1-100 µg/ml; tracer: 0,001-100 µg/ml for 30 min at RT).
- Flow Cytometry (0,5-1,0 µg/million cells in 0,1 ml).
- Immunofluorescence (0,5-1,0 µg/ml).
- Immunohistology (formalin-fixed: 1-2 µg/ml for 30 min at RT; requires boiling tissue sections in 10mM Citrate Buffer, pH 6,0, for 10-20 min followed by cooling at RT for 20 minutes).
- Rapid test (either coated to the strip, or as labeled conjugate).

Positive control

Prostate or prostate carcinoma

References

- This antibody has not been published.