

**Catalogue No.**

**Qty:**

600 µg

## Anti-Rab11a

**Source:** Goat

**General description:** Goat polyclonal antibody to mouse Rab11a. Rab11a belongs to the small ATPase superfamily, Rab family. The protein is membrane-bound and plays essential roles in vesicle and granule targeting. Similar to Rab11b, it has been shown that Rab11a associates with recycling endosomes.

**Alternative names:** MGC1490, Rab11, RAB11A member RAS oncogene family, RB11A, YL8 antibody.

**Form:** Polyclonal antibody supplied as a 200 µl (3 mg/ml) aliquot in PBS, 20% glycerol and 0.05% sodium azide. This antibody is epitope-affinity purified from goat antiserum.

**Immunogen:** Purified recombinant peptide derived from within residues 110 aa to the C-terminus of mouse Rab11a produced in E. coli.

**Specificity:** Detects a band of 24 kDa by Western blot in the following human, rat and mouse whole cell lysates and transfected cells with GFP-Rab11a cds. This antibody is specific to Rab11a. It does not recognize Rab11b.

**Reactivity:** Reacts with Human, Rat, Mouse, Monkey and Canine proteins

Sample	WB	IHC (F)	IHC (P)	IF	ELISA
Human	+++	+++	+++	+++	ND
Rat	+++	+++	+++	+++	ND
Mouse	+++	+++	+++	+++	ND
Canine	+++	+++	+++	+++	ND
Monkey	+++	+++	+++	+++	ND

+++ excellent, ++ good, + poor, ND not determined

**Usage:**

WB: 1:250-1:2,000

IF: 1:50-1:250

IHC (P): 1:100-1:400

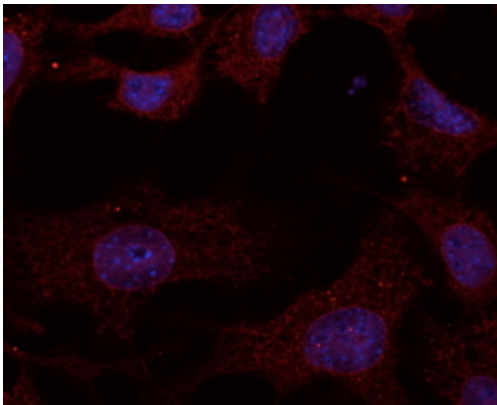
IHC (F): 1:100-1:400

**Storage:** Store at -20 C for long-term storage. Store at 2-8 C for up to one month.

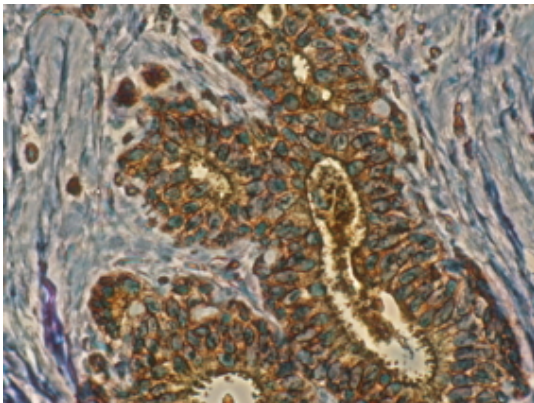
**Special instructions:** The antibody solution should be gently mixed before use. Avoid freeze/thaw cycles..

**References:**

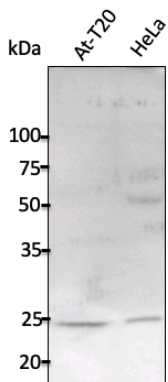
1. Cardoso MHS, PhD Thesis, NOVA University of Lisbon, Portugal 2018



Immunofluorescence – anti-Rab11a Ab at 1/100 dilution in NHI/3T3 cells; cells were fixed with methanol and permeabilized with 0.1% saponin;



Anti-Rab11a antibody IHC staining of human mammary tissue; immunohistochemistry of formalin-fixed, paraffin-embedded tissue after heat-induced antigen retrieval; antibody concentration 1/200;



Anti-Rab11a Ab at 1/2,500 dilution; lysates at 100 µg per lane; rabbit polyclonal to goat IgG (HRP) at 1/10,000 dilution;

**SICGEN's Proprietary Immunogen Policy**

In order to produce high specific antibodies SICGEN has invested a lot of time and effort into selecting immunogen sequences. SICGEN has decided to protect this information by not publishing it on the website. However, these sequences are available on request.