

**Catalogue No.**

**Qty:**

400 µg

## Anti-Rab25

**Source:** Goat

**General description:** RAB25 belongs to the large RAB family of low molecular weight GTPases that are involved in intracellular membrane trafficking. Members of the RAB11 subfamily, including RAB25, control the return of internalized membrane-associated moieties to the cell surface.

**Alternative names:** CATX-8, RAB11C antibody.

**Form:** Polyclonal antibody supplied as a 200 µl (2 mg/ml) aliquot in PBS, 20% glycerol and 0.05% sodium azide. This antibody is epitope-affinity purified from goat antiserum.

**Immunogen:** Purified recombinant peptide derived from within residues 120 aa to the C-terminus of mouse Rab25 produced in E. coli.

**Specificity:** Detects Rab25 by Western blot in transfected cells with GFP-Rab25.

**Reactivity:** Reacts with Human, Rat, Mouse, Monkey and Canine proteins

Sample	WB	IHC (F)	IHC (P)	IF	ELISA
Human	+++	+++	+++	+++	ND
Rat	+++	+++	+++	+++	ND
Mouse	+++	+++	+++	+++	ND
Canine	+++	+++	+++	+++	ND
Monkey	+++	+++	+++	+++	ND

+++ excellent, ++ good, + poor, ND not determined

**Usage:**

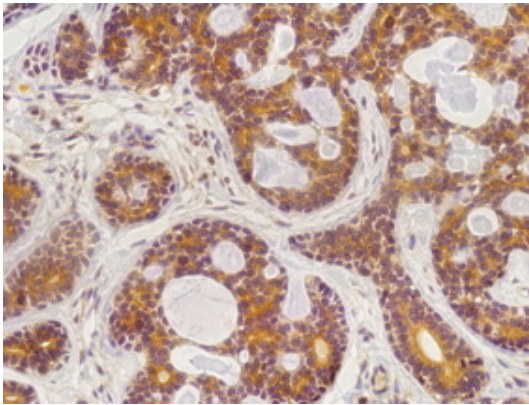
WB: 1:250-1:2,000  
IF: 1:25-1:250  
IHC (P): 1:200-1:1:1,000  
IHC (F): 1:200-1:1:1,000

**Storage:** For continuous use, store at 2-8 C for one-two days. For extended storage, store in -20 C freezer. Working dilution samples should be discarded if not used within 12 hours.

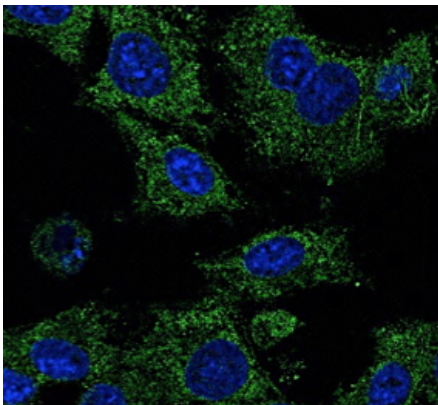
**Special instructions:** The antibody solution should be gently mixed before use..

## References:

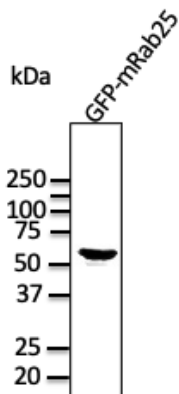
1.



Anti-Rab25 antibody IHC staining of mammary tissue; Immunohistochemistry of formalin-fixed, paraffin-embedded tissue after heat-induced antigen retrieval; antibody concentration 1/200;



Immunofluorescence – anti-Rab25 Ab in Hepa1-6 cells at 1/50 dilution; methanol fixation;



Anti-Rab25 Ab at 1/1,000 dilution; HEK293 cells transfected with GFP-Rab25; rabbit polyclonal to goat IgG (HRP) at 1/10,000 dilution;

For research use only, not for diagnostic use

**SICGEN's Proprietary Immunogen Policy**

In order to produce high specific antibodies SICGEN has invested a lot of time and effort into selecting immunogen sequences. SICGEN has decided to protect this information by not publishing it on the website. However, these sequences are available on request.