

**Catalogue No.**

**Qty:**

800 µg

## Anti-Rab32

**Source:** Goat

**General description:** Goat polyclonal antibody to Rab32. Rab32 belongs to the small GTPase superfamily, Rab family. The protein is membrane-bound and involved in intracellular vesicle transport and small GTPase mediated signal transduction.

**Alternative names:** N/A

**Form:** Polyclonal antibody supplied as a 200 µl (4 mg/ml) aliquot in PBS, 20% glycerol and 0.05% sodium azide. This antibody is epitope-affinity purified from goat antiserum.

**Immunogen:** Purified recombinant peptide derived from within residues 120 aa to the C-terminus of mouse Rab27a produced in E. coli.

**Specificity:** Detects an endogenous band by Western blot in Melan-ink, XB2 and 3T3 cell line lysates (approximately 30 kDa) and in transfected cells with GFP-Rab32 cds.

**Reactivity:** Reacts with Human, Rat, Mouse, Monkey and Canine proteins

Sample	WB	IHC (F)	IHC (P)	IF	ELISA
Human	+++	ND	ND	+++	ND
Rat	+++	ND	ND	+++	ND
Mouse	+++	ND	ND	+++	ND
Canine	+++	ND	ND	+++	ND
Monkey	+++	ND	ND	+++	ND

+++ excellent, ++ good, + poor, ND not determined

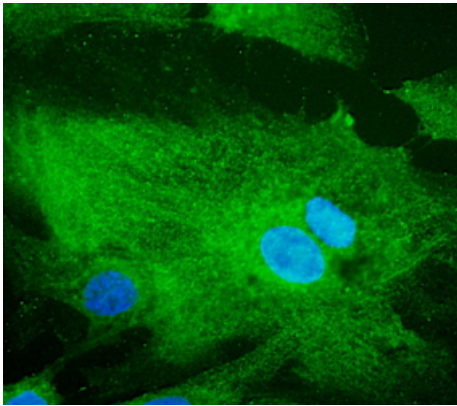
**Usage:**

WB: 1:500-1:2,000

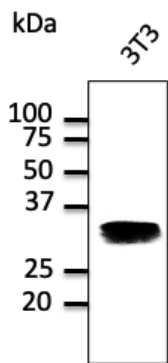
IF: 1:100-1:500

**Storage:** For continuous use, store at 2-8 C for one-two days. For extended storage, store in -20 C freezer. Working dilution samples should be discarded if not used within 12 hours.

**Special instructions:** The antibody solution should be gently mixed before use. Avoid freeze/thaw cycles..



Immunostaining of primary RPE cells with Rab32 Ab;



Endogenous Rab32 protein detected with anti-Rab32 polyclonal Ab at 1/500 dilution; lysate at 100 µg per lane;

For research use only, not for diagnostic use

#### SICGEN's Proprietary Immunogen Policy

In order to produce high specific antibodies SICGEN has invested a lot of time and effort into selecting immunogen sequences. SICGEN has decided to protect this information by not publishing it on the website. However, these sequences are available on request.