

**Catalogue No.**

**Qty:**

600 µg

## Anti-Rab31

**Source:** Goat

**General description:** RAB31 belongs to the large RAB family of low molecular weight GTPases that are involved in intracellular membrane trafficking. This protein is required for the normal function and integrity of the Golgi apparatus and the trans -Golginetwork. Moreover, Rab31 plays a role in the transport from Golgi to endosomes (M6PR), internalization from cell membrane into endosomes (EGFR), insulin-stimulated translocation to cell membrane (GLUT4), etc.

**Alternative names:** Rab22b, Ras -Related Protein, Rab-31 antibody.

**Form:** Polyclonal antibody supplied as a 200 µl (3mg/ml) aliquot in PBS, 20% glycerol and 0.05% sodium azide. This antibody is epitope - affinity purified from goat antiserum.

**Immunogen:** Purified recombinant peptide derived from within residues 95 aa to the C-terminus of mouse Rab31 produced in E. coli.

**Specificity:** Detects endogenous levels of Rab31 and in transfected cells with GFP-Rab31 by Western blot.

**Reactivity:** Reacts with Human, Rat, Mouse, Monkey and Canine proteins

Sample	WB	IHC (F)	IHC (P)	IF	ELISA
Human	+++	ND	ND	ND	ND
Rat	+++	ND	ND	ND	ND
Mouse	+++	ND	ND	ND	ND
Canine	+++	ND	ND	ND	ND
Monkey	+++	ND	ND	ND	ND

+++ excellent, ++ good, + poor, ND not determined

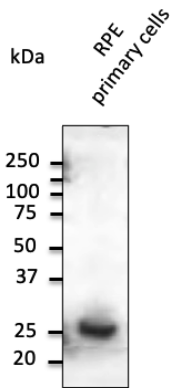
**Usage:**

WB: 1:250-1:2,000

**Storage:** For continuous use, store at 2-8 C for one-two days. For extended storage, store in -20 C freezer.

Working dilution samples should be discarded if not used within 12 hours.

**Special instructions:** The antibody solution should be gently mixed before use..



Anti-Rab31 Ab at 1/1,000 dilution using RPE primary cell culture; rabbit polyclonal to goat IgG (HRP) at 1/10,000 dilution;

For research use only, not for diagnostic use

**SICGEN's Proprietary Immunogen Policy**

In order to produce high specific antibodies SICGEN has invested a lot of time and effort into selecting immunogen sequences. SICGEN has decided to protect this information by not publishing it on the website. However, these sequences are available on request.