

Catalogue No. AB0115-200

Qty: 600 µg (3 mg/ml)

CDH1 Polyclonal Antibody

Source: Goat

General description: Goat polyclonal to CDH1. CDH1 is a classical member of the cadherin superfamily. This protein is a calcium dependent cell-cell adhesion glycoprotein comprised consists of 5 cadherin repeats in the extracellular domain, one trans membrane domain, and a and a highly conserved intracellular domain that binds b-catenin and p120-catenin. CDH1 is involved in mechanisms regulating proliferation, mobility and cell-cell adhesions of epithelial cells. Loss of E-cadherin function or expression has been implicated in cancer metastasis and progression.

Alternative names: ARC-1, CAM 120/80, CD324, CDH1, cdhc-A, CDHE, ECAD, E-Cad E-cadherin, Epithelial cadherin, l-cam, LCAM, P09803, P12830 / Q9R0T4, UVO, Uvomorulin, XBcad, XB-cadherin, XTCAD-1 antibody.

Form: Polyclonal antibody supplied as a 200 µl (3 mg/ml) aliquot in PBS, 20% glycerol and 0.05% sodium azide. This antibody is epitope-affinity purified from goat antiserum.

Immunogen: Recombinant peptide derived from within residues 601 to 701 of human CDH1 produced in *E. coli*.

Specificity: Detects endogenous levels of total E-cadherin protein by Western blot in the whole cell lysates (e.g. HeLa and COS-7). This Ab does not recognize CDH2.

Reactivity: Reacts against human, rat, mouse, canine and monkey proteins.

Sample	Western blot	Immuno-fluorescence	Histochemistry (paraffin)	Histochemistry (frozen)
human	+++	+++	+++	+++
Rat	+++	+++	+++	+++
Mouse	+++	+++	+++	+++
canine	+++	+++	+++	+++
monkey	+++	+++	+++	+++

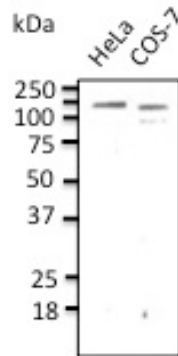
+++ excellent, ++ good, + poor, ND not determined

Usage: Western blot 1:500-1:2,000
 Immunofluorescence 1:50-1:200
 Immunohistochemistry (paraffin) 1:200-1:1,000
 Immunohistochemistry (frozen) 1:200-1:1,000

Storage: Store at -20 C for long-term storage. Store at 2-8 C for up to one month.

Special instructions: Avoid freeze/thaw cycles.

References:



Endogenous CDH1 detected with AB0115 at 1/500 dilution; lysate at 100 µg per lane and rabbit polyclonal to goat IgG (HRP) at 1/10,000 dilution.

For research use only, not for diagnostic use

SICGEN's Proprietary Immunogen Policy

In order to produce high specific antibodies SICGEN has invested a lot of time and effort into selecting immunogen sequences. SICGEN has decided to protect this information by not publishing it on the website. However, these sequences are available on request.