

**Catalogue No.**

**Qty:**

300 µg

## Anti-Dis3L2

**Source:** Goat

**General description:** Goat polyclonal antibody to Dis3L2. Dis3L2 is an exoribonuclease from the RNase II/RNB family which degrades RNAs in a 3'-5' direction. This protein has been implicated in cellular proliferation.

**Alternative names:** CG16940, Dis3L2, Dis3 like 3'-5' exoribonuclease 2, dmdis3l2, dmDis3l2, Dmel\CG16940 antibody.

**Form:** Polyclonal antibody supplied as a 100 µl (3 mg/ml) aliquot in PBS, 20% glycerol and 0.05% sodium azide. This antibody is epitope-affinity purified from goat antiserum.

**Immunogen:** Recombinant peptide derived from within residues 430 aa to the N-terminus of Drosophila melanogaster protein in E. coli.

**Specificity:** Detects endogenous levels of Dis3L2 in Drosophila protein extracts by Western blot.

**Reactivity:** Reacts with Fruit fly proteins

Sample	WB	IHC (F)	IHC (P)	IF	ELISA
Fruit fly	+++	ND	ND	ND	ND

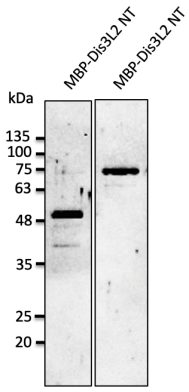
+++ excellent, ++ good, + poor, ND not determined

**Usage:**

WB: 1:500-1:2,000

**Storage:** For continuous use, store at 2-8 C for one-two days. For extended storage, store in -20 C freezer. Working dilution samples should be discarded if not used within 12 hours.

**Special instructions:** The antibody solution should be gently mixed before use..



Anti-Dis3L2 Ab at 1/2,500 dilution; lysates at 50 ng per lane; rabbit polyclonal to goat IgG (HRP) at 1/10,000 dilution;

For research use only, not for diagnostic use

**SICGEN's Proprietary Immunogen Policy**

In order to produce high specific antibodies SICGEN has invested a lot of time and effort into selecting immunogen sequences. SICGEN has decided to protect this information by not publishing it on the website. However, these sequences are available on request.