

**Catalogue No.**

**Qty:**

300 µg

## Anti-Rnase II

**Source:** Goat

**General description:** Goat polyclonal antibody to RNase II. RNase II is a component of the RNA degradosome complex. In *E. coli* it is likely to play a role in coupling and coordinating the multiple elements of the RNA degradation pathways.

**Alternative names:** ECK1281, rnb antibody.

**Form:** Polyclonal antibody supplied as a 100 µl (3 mg/ml) aliquot in PBS, 20% glycerol and 0.05% sodium azide. This antibody is epitope-affinity purified from goat antiserum.

**Immunogen:** Recombinant RNase II produced in *E. coli*.

**Specificity:** Detects endogenous levels of RNase II by Western blot.

**Reactivity:** Reacts with *Escherichia* proteins

Sample	WB	IHC (F)	IHC (P)	IF	ELISA
<i>Escherichia</i>	+++	ND	ND	ND	ND

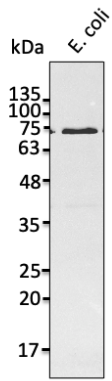
+++ excellent, ++ good, + poor, ND not determined

**Usage:**

WB: 1:500-1:5,000

**Storage:** For continuous use, store at 2-8 C for one-two days. For extended storage, store in -20 C freezer. Working dilution samples should be discarded if not used within 12 hours.

**Special instructions:** The antibody solution should be gently mixed before use..



Anti-Rnase II Ab at 1/2,500 dilution; lysates at 50  $\mu$ g per lane; rabbit polyclonal to goat IgG (HRP) at 1/10,000 dilution;

For research use only, not for diagnostic use

**SICGEN's Proprietary Immunogen Policy**

In order to produce high specific antibodies SICGEN has invested a lot of time and effort into selecting immunogen sequences. SICGEN has decided to protect this information by not publishing it on the website. However, these sequences are available on request.