

Catalogue No.

Qty:

800 µg

Anti-C-peptide

Source: Goat

General description: Goat polyclonal to C-Peptide. C-Peptide is part of proinsulin, that consists of C-Peptide, alpha and beta chains that later become linked together to form the insulin molecule. Each proinsulin molecule produces one molecule of insulin and one molecule of C-peptide that is released into the blood. C-peptide stimulates the N+, K+ -ATPase and endothelial nitric oxide synthase activities by binding to cell membranes which leads to increased intracellular Ca²⁺ concentration.

Alternative names: N/A

Form: Polyclonal antibody supplied as a 200 µl (4 mg/ml) aliquot in PBS, 20% glycerol and 0.05% sodium azide. This antibody is epitope-affinity purified from goat antiserum.

Immunogen: Purified recombinant human and rat C-peptides produced in E. coli as a fusion protein.

Specificity: Detects C-peptide using MBP-C-peptide recombinant fusion protein and GFP-C-peptide expressed in transfected mammalian cells.

Reactivity: Reacts with Human and Rat proteins

Sample	WB	IHC (F)	IHC (P)	IF	ELISA
Human	+++	ND	ND	ND	ND
Rat	+++	ND	ND	ND	ND

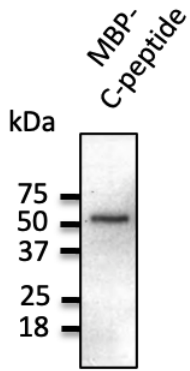
+++ excellent, ++ good, + poor, ND not determined

Usage:

WB: 1:500-1:2,000

Storage: For continuous use, store at 2-8 C for one-two days. For extended storage, store in -20 C freezer. Working dilution samples should be discarded if not used within 12 hours.

Special instructions: The antibody solution should be gently mixed before use..



Anti-C-peptide Ab at 1/1,000 dilution; 20 ng of recombinant protein per lane; rabbit polyclonal to goat IgG (HRP) at 1/10,000 dilution;

For research use only, not for diagnostic use

SICGEN's Proprietary Immunogen Policy

In order to produce high specific antibodies SICGEN has invested a lot of time and effort into selecting immunogen sequences. SICGEN has decided to protect this information by not publishing it on the website. However, these sequences are available on request.