

Catalogue No.

Qty:

600 µg
1.5 mg

Anti-Rab27 Pan

Source: Goat

General description: Goat polyclonal antibody to mouse Rab27. Rab27 belongs to the small GTPase superfamily, Rab family. The protein is membrane-bound and involved in lysosome-related vesicle transport and small GTPase mediated signal transduction.

Alternative names: C25KG, GS2, GTP-binding protein Ram, rab-27, Rab27a, Rab27b, ras-related protein Rab-27A, ras-related protein Rab-27B, RAB27, RAM antibody.

Form: Polyclonal antibody supplied as a 200 or 500 µl (3 mg/ml) aliquot in PBS, 20% glycerol and 0.05% sodium azide. This antibody is epitope-affinity purified from goat antiserum.

Immunogen: Purified recombinant peptide derived from within residues 120 aa to the C-terminus of mouse Rab27a and rab27b produced in E. coli.

Specificity: Detects total Rab27 levels by Western blot in the following human, rat and mouse whole cell lysates and transfected cells with GFP-Rab27a and GFP-Rab27b cds.

Reactivity: Reacts with Human, Rat, Mouse, Monkey and Canine proteins

Sample	WB	IHC (F)	IHC (P)	IF	ELISA
Human	+++	+++	+++	+++	ND
Rat	+++	+++	+++	+++	ND
Mouse	+++	+++	+++	+++	ND
Canine	+++	+++	+++	+++	ND
Monkey	+++	+++	+++	+++	ND

+++ excellent, ++ good, + poor, ND not determined

Usage:

WB: 1:500-1:2,000

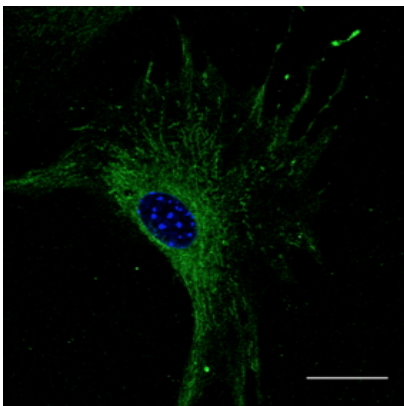
IHC (F): 1:50-1:400
IHC (P): 1:50-1:400
IF: 1:50-1:250
ELISA: ND

Storage: For continuous use, store at 2-8 C for one-two days. For extended storage, store in -20 C freezer. Working dilution samples should be discarded if not used within 12 hours.

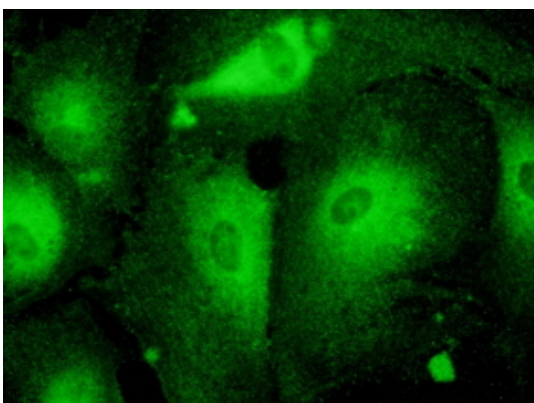
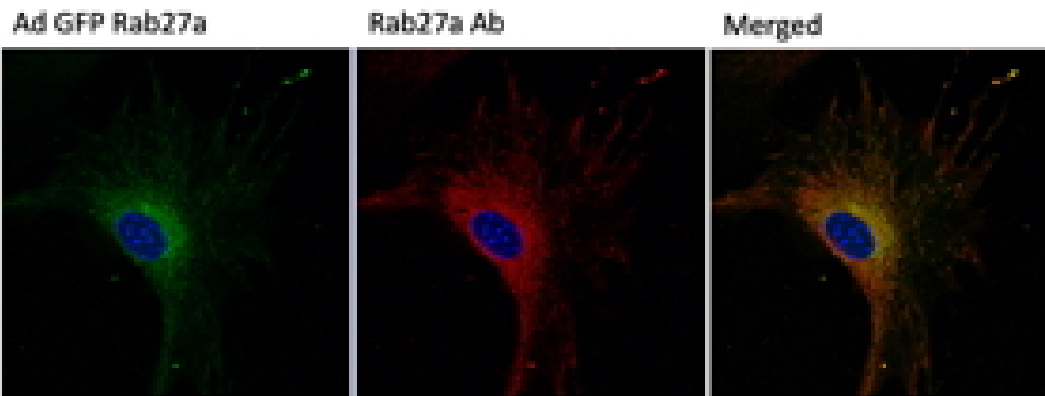
Special instructions: The antibody solution should be gently mixed before use..

References:

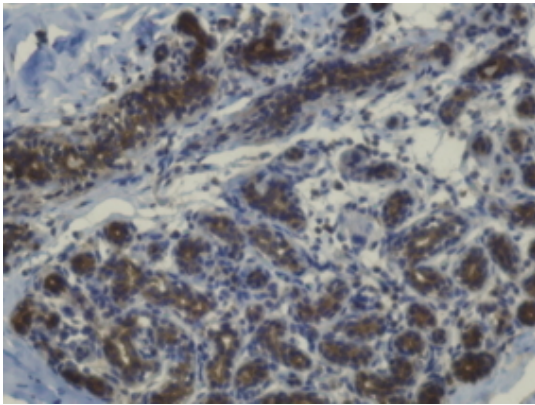
1. Ferreira JV, Rosa Soares A, Ramalho JS, et al. PLoS One 2019 Oct. PMID: 31613922
2. Schorb TS, PhD Thesis, University of Berlin, Germany 2018



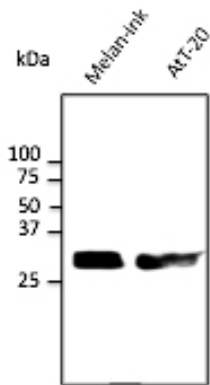
Immunostaining of B6-RPE07 cells with Rab27 antibody (1/50);



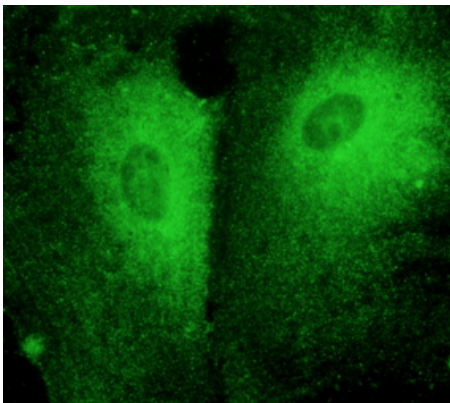
Immunostaining of primary RPE cells with Rab27 antibody (1/50);



Anti-Rab27a antibody IHC staining of human mammary tissue; immunohistochemistry of formalin-fixed, paraffin-embedded tissue after heat-induced antigen retrieval; antibody concentration 1/200;



Anti-Rab27 pan Ab at 1/500 dilution; 50 µg of total protein per lane; rabbit polyclonal to goat IgG (HRP) at 1/10,000 dilution;



Immunostaining of primary RPE cells with Rab27 antibody (1/50);

For research use only, not for diagnostic use

SICGEN's Proprietary Immunogen Policy

In order to produce high specific antibodies SICGEN has invested a lot of time and effort into selecting immunogen sequences. SICGEN has decided to protect this information by not publishing it on the website. However, these sequences are available on request.