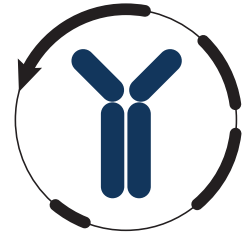


Datasheet



Mouse mAb to **Histone H1**
Clone **AE-4**
Isotype **IgG2a-κ**

Source

A BALB/c mouse was immunized with human leukemia biopsy cells.
Fusion partner: NS-1.

Specifications

AE-4 recognizes histone H1 in the nuclei of animal and plant cells. It produces a speckled nuclear staining pattern in normal and malignant cells.

Species reactivity

Positive: human, mouse, rat.

Applications

Demonstrate Histone H1 in IHC, FC or IF.

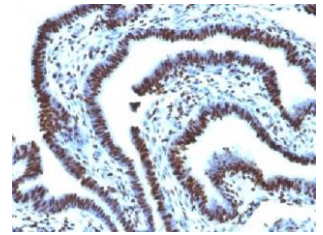


Figure 1: Human ovarian cancer stained with AE-4 (paraffin)

Flow cytometry	Frozen sections	Immunofluorescence	Paraffin sections
+	+	+	Citrate

Format

Produced in tissue culture, contains no host Ig. Antibodies are affinity purified and presented in PBS with 0,02 % sodium azide.

Stored at 4°C- 8°C, shelf life is at least 24 months after purchase.

Dilution advice

- Flow Cytometry (1-2 µg/million cells in 0.1ml, fix cells in 4% PFA for 10 min, at 4°C, permeabilize with 0,2% saponin or digitonin for 15 min, at 4°C).
- Immunofluorescence (0.5-1 µg/ml).
- Immunohistology (1-2 µg/ml for 30 min at RT; staining of formalin-fixed tissues requires boiling tissue sections in 10mM citrate buffer, pH 6.0, for 10-20 min followed by cooling at RT for 20 minutes).

Positive control

HeLa, A-431, LNCap or Jurkat cells. Breast carcinoma or tonsil.

References

- This antibody has not been published.