

Datasheet



Mouse mAb to **CD5**
Clone **BB8**
Isotype **IgG1-κ**

Source

A BALB/c mouse was immunized with PHA activated human T cells.
Fusion partner: NS-1.

Specifications

BB8 recognizes a 67 kDa protein, consistent with CD5. CD5 is found on 95% of thymocytes and 72% of peripheral blood lymphocytes. In lymph nodes, the main reactivity is observed in T-cells areas. CD5 is a pan T-cell marker that also reacts with a range of neoplastic B-cells, e.g. chronic lymphocytic leukemia/small lymphocytic lymphoma (CLL/SLL), mantle cell lymphoma, and a subset (~ 10%) of diffuse large B-cell lymphoma. Among human cell lines, B-cell lines are negative (10/10), while human T-cell lines are positive (5/5). CD5 interacts with CD72.

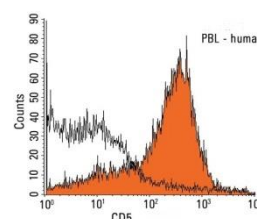


Figure 1: Human PBLs stained for CD5 (FACS).

Species reactivity

Positive: human.

Applications

Characterization of leukemia and lymphoma. CD5 is a marker for mantle cell lymphoma.

Flow cytometry	Frozen sections	Immunofluorescence	Paraffin sections
+	—	+	—

Format

Produced in tissue culture, contains no host Ig. Antibodies are affinity purified and presented in PBS with 0,02% sodium azide.
Stored at 4°C-8°C, shelf life is at least 24 months after purchase.

Dilution advice

- Flow cytometry (0,5-1,0 µg/million cells in 0,1 ml)
- Immunofluorescence (0,5-1,0 µg/ml).

Positive control

293T, Ramos or MOLT-4 cells. Lymph node and tonsil.

References

- Wang, MY et. al, *Bone Marrow Transplant*. **9(5)**: 319-23 (1992).