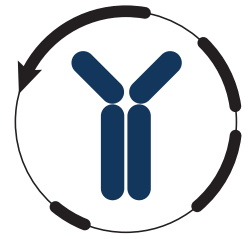


Datasheet



Mouse mAb to **CD99**
Clone **EBS-CD-044**
Isotype **IgM-κ**

Source

A BALB/c mouse was immunized with purified E-rosette forming cells from human PBL.

Specifications

EBS-CD-044 reacts with CD99 or MIC2. Human thymocytes, PBLs and some T-ALL isolates and cell lines are positive. It is also present on pancreas and on Ewing sarcoma, which forms the practical application of the antibody. It is involved in T-cell adhesion processes and in spontaneous rosette formation with erythrocytes.

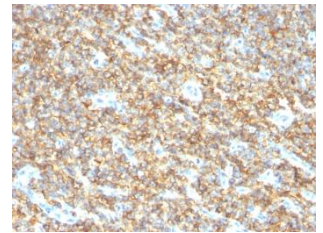


Figure 1: Ewing sarcoma stained with EBS-CD-044 (paraffin).

Species reactivity

Positive: human.

Applications

Immunohistochemistry on frozen sections and paraffin sections. Flow cytometry, immunofluorescence and western blotting used to identify Ewing sarcoma in tissue sections.

Flow cytometry	Frozen sections	Immunofluorescence	Paraffin sections	Western blot
+	+	+	Citrate	+

Format

Produced in tissue culture, contains no host Ig. Antibodies are affinity purified and presented in PBS with 0,02% sodium azide.

Stored at 4°C-8°C, shelf life is at least 24 months after purchase.

Dilution advice

- Flow cytometry (1-2 µg/million cells in 0,1 ml, fix cells in 4% PFA for 10 min, at 4°C, permeabilize with 0,02% saponin or digitonin for 15 min, at 4°C).
- Immunoblotting (1-2 µg/ml).
- Immunofluorescence (1-2 µg/ml).
- Immunohistology (formalin-fixed: 2-4 µg/ml for 30 min at RT; staining of formalin-fixed tissues requires boiling tissue sections in 10mM citrate buffer, pH 6,0, for 10-20 min followed by cooling at RT for 20 minutes).

Positive control

Pancreas, thymus, Ewing sarcoma.

References

- Rajasekariah et al. in: Leukocyte Typing III A. McMichael (ed), Oxford University Press, Oxford (1987).
- Sandrin et al. Immunogenetics 35: 283-28 (1992).