

Datasheet



Mouse mAb to **MHC II (mouse)
(I-A region)**
Clone **IBL-5/22**
Isotype **Rat IgG-κ**

Source

A Wistar rat was immunized with mouse lymph node cells.
Fusion partner: Sp2/0-Ag14.

Specifications

IBL-5/22 specifically detects mouse I-A MHC Class II. MHC Class II molecules bind to CD4 during interaction of CD4⁺ T-cells with antigen-presenting cells or with target cells.

Species reactivity

Positive: mouse.
Negative: human.

Applications

Demonstration of I-A MHC Class II in mouse.

Flow cytometry	Frozen sections	Immunofluorescence	Immunoprecipitation	Paraffin sections	Western blot
+	+	+	+	+	+

Format

Produced in tissue culture, contains no host Ig. Antibodies are affinity purified and presented in PBS with 0,02 % sodium azide.
Stored at 4°C- 8°C, shelf life is at least 24 months after purchase.

Dilution advice

- Flow cytometry (0,5-1,0 µg/million cells in 0,1 ml).
- Immunoblot (1-2 µg/ml).
- Immunofluorescence (0,5-1,0 µg/ml).
- Immunohistology (1-2 µg/ml for 30 min at RT; staining of formalin-fixed tissues requires boiling tissue sections in 10mM citrate buffer, pH 6.0, for 10-20 min followed by cooling at RT for 20 minutes).
- Immunoprecipitation (1-2 µg per 100-500 µg cell lysate protein/1 ml of anti-mouse coated Sepharose-4B suspension).

Positive control

Mouse spleen.

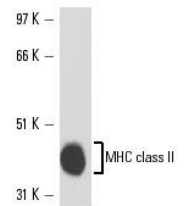


Figure 1: Mouse PBL cell lysate stained with IBL-5/22 (Western blot)

Datasheet



References

- Butovsky, O, et al. *Proc Natl Acad Sci U S A.* **103(31)**: 11784-9 (2006).
- Gennari F, et al, *Hum Gene Ther.* **20(6)**: 554-62 (2009).
- Adams AE et al, *Biochim Biophys Acta* **1777**: 772-6 (2008).
- Shin, TS, et al, *Allergy* **65**: 1256-1265 (2010).
- Rodríguez-Prados, JC, et al. *J. Immunol.* **185**: 605-614 (2010).
- Hinterberger, M., et al. *Nat. Immunol.* **11**: 512-519 (2010).