

**iFluor™ 750 maleimide**

 Catalog number: 1068  
 Unit size: 1 mg

Component	Storage	Amount
iFluor™ 750 maleimide	Freeze (< -15 °C), Minimize light exposure	1 vial (1 mg)

**OVERVIEW**

AAT Bioquest's iFluor™ dyes are developed for labeling proteins, in particular, antibodies. These dyes are optimized to have minimal fluorescence quenching effect on proteins and nucleic acids. Our iFluor™ 750 dyes have fluorescence excitation and emission maxima close to 750 nm and 780 nm respectively with good photostability. Our in-house comparable studies indicated that our iFluor™ 750 dyes are significantly brighter than the corresponding Cy7® and Alexa Fluor® 750. These spectral characteristics make them a superior alternative to Cy7® and Alexa Fluor® 750 (Cy7® and Alexa Fluor® are the trademarks of GE Healthcare and Invitrogen respectively). iFluor™ 780 conjugates have been widely used in fluorescence animal imaging applications. The iFluor™ 750 maleimide is reasonably stable and shows good reactivity and selectivity with thiol group.

**PREPARATION OF STOCK SOLUTIONS**

*Unless otherwise noted, all unused stock solutions should be divided into single-use aliquots and stored at -20 °C after preparation. Avoid repeated freeze-thaw cycles.*

**1. iFluor™ 750 maleimide stock solution (Solution B)**

Add anhydrous DMSO into the vial of iFluor™ 750 maleimide to make a 10 mM stock solution. Mix well by pipetting or vortex.

**Note** Prepare the dye stock solution (Solution B) before starting the conjugation. Use promptly. Extended storage of the dye stock solution may reduce the dye activity. Solution B can be stored in freezer for upto 4 weeks when kept from light and moisture. Avoid freeze-thaw cycles.

**2. Protein stock solution (Solution A)**

Mix 100 µL of a reaction buffer (e.g., 100 mM MES buffer with pH ~6.0) with 900 µL of the target protein solution (e.g. antibody, protein concentration >2 mg/mL if possible) to give 1 mL protein labeling stock solution.

**Note** The pH of the protein solution (Solution A) should be 6.5 ± 0.5.

**Note** Impure antibodies or antibodies stabilized with bovine serum albumin (BSA) or other proteins will not be labeled well.

**Note** The conjugation efficiency is significantly reduced if the protein concentration is less than 2 mg/mL. For optimal labeling efficiency the final protein concentration range of 2-10 mg/mL is recommended.

**Optional:** if your protein does not contain a free cysteine, you must treat your protein with DTT or TCEP to generate a thiol group. DTT or TCEP are used for converting a disulfide bond to two free thiol groups. If DTT is used you must remove free DTT by dialysis or gel filtration before conjugating a dye maleimide to your protein. Following is a sample protocol for generating a free thiol group:

1. Prepare a fresh solution of 1 M DTT (15.4 mg/100 µL) in distilled water.
2. Make IgG solution in 20 mM DTT: add 20 µL of DTT stock per ml of IgG solution while mixing. Let stand at room temp for 30 minutes without additional mixing (to minimize reoxidation of cysteines to cystines).
3. Pass the reduced IgG over a filtration column pre-equilibrated with "Exchange Buffer". Collect 0.25 mL fractions off the column.
4. Determine the protein concentrations and pool the fractions with the majority of the IgG. This can be done either spectrophotometrically or colorimetrically.

5. Carry out the conjugation as soon as possible after this step (see Sample Experiment Protocol).

**Note** IgG solutions should be >4 mg/mL for the best results. The antibody should be concentrated if less than 2 mg/mL. Include an extra 10% for losses on the buffer exchange column.

**Note** The reduction can be carried out in almost any buffers from pH 7-7.5, e.g., MES, phosphate or TRIS buffers.

**Note** Steps 3 and 4 can be replaced by dialysis.

**SAMPLE EXPERIMENTAL PROTOCOL**

This labeling protocol was developed for the conjugate of Goat anti-mouse IgG with iFluor™ 750 maleimide. You might need further optimization for your particular proteins.

**Note** Each protein requires distinct dye/protein ratio, which also depends on the properties of dyes. Over labeling of a protein could detrimentally affects its binding affinity while the protein conjugates of low dye/protein ratio gives reduced sensitivity.

**Run conjugation reaction**

1. Use 10:1 molar ratio of Solution B (dye)/Solution A (protein) as the starting point: Add 5 µL of the dye stock solution (Solution B, assuming the dye stock solution is 10 mM) into the vial of the protein solution (95 µL of Solution A) with effective shaking. The concentration of the protein is ~0.05 mM assuming the protein concentration is 10 mg/mL and the molecular weight of the protein is ~200KD.

**Note** We recommend to use 10:1 molar ratio of Solution B (dye)/Solution A (protein). If it is too less or too high, determine the optimal dye/protein ratio at 5:1, 15:1 and 20:1 respectively.

2. Continue to rotate or shake the reaction mixture at room temperature for 30-60 minutes.

**Purify the conjugation**

The following protocol is an example of dye-protein conjugate purification by using a Sephadex G-25 column.

1. Prepare Sephadex G-25 column according to the manufacture instruction.
2. Load the reaction mixture (From "Run conjugation reaction") to the top of the Sephadex G-25 column.
3. Add PBS (pH 7.2-7.4) as soon as the sample runs just below the top resin surface.
4. Add more PBS (pH 7.2-7.4) to the desired sample to complete the column purification. Combine the fractions that contain the desired dye-protein conjugate.

**Note** For immediate use, the dye-protein conjugate need be diluted with staining buffer, and aliquoted for multiple uses.

**Note** For longer term storage, dye-protein conjugate solution need be concentrated or freeze dried.

written permission from AAT Bioquest. Please call 408-733-1055 or email [info@aatbio.com](mailto:info@aatbio.com) if you have any questions.

## EXAMPLE DATA ANALYSIS AND FIGURES

### Characterize the Desired Dye-Protein Conjugate

The Degree of Substitution (DOS) is the most important factor for characterizing dye-labeled protein. Proteins of lower DOS usually have weaker fluorescence intensity, but proteins of higher DOS tend to have reduced fluorescence too. The optimal DOS for most antibodies is recommended between 2 and 10 depending on the properties of dye and protein. For effective labeling, the degree of substitution should be controlled to have 5-8 moles of iFluor™ 750 maleimide to one mole of antibody. The following steps are used to determine the DOS of iFluor™ 750 maleimide labeled proteins.

### Measure absorption

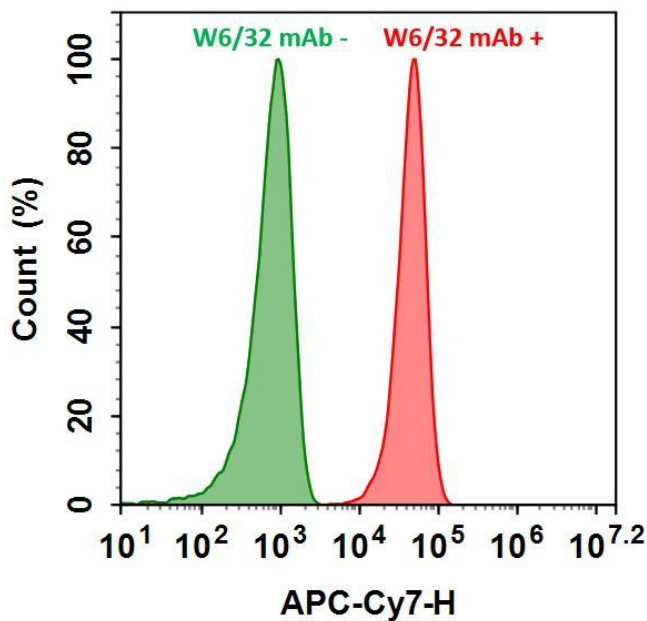
To measure the absorption spectrum of a dye-protein conjugate, it is recommended to keep the sample concentration in the range of 1-10  $\mu\text{M}$  depending on the extinction coefficient of the dye.

### Read OD (absorbance) at 280 nm and dye maximum absorption ( $\lambda_{\text{max}}$ = 779 nm for iFluor™ 750 dyes)

For most spectrophotometers, the sample (from the column fractions) need be diluted with de-ionized water so that the OD values are in the range of 0.1 to 0.9. The O.D. (absorbance) at 280 nm is the maximum absorption of protein while 779 nm is the maximum absorption of iFluor™ 750 maleimide. To obtain accurate DOS, make sure that the conjugate is free of the non-conjugated dye.

### Calculate DOS

You can calculate DOS using our tool by following this link: <https://www.aatbio.com/tools/degree-of-labeling-calculator>



**Figure 1.**

HL-60 cells were incubated with (Red, +) or without (Green, -) Anti-human HLA-ABC (W6/32 mAb), followed by iFluor™ 750 goat anti-mouse IgG conjugate. The fluorescence signal was monitored using ACEA NovoCyte flow cytometer in APC-Cy7 channel.

### DISCLAIMER

AAT Bioquest provides high-quality reagents and materials for research use only. For proper handling of potentially hazardous chemicals, please consult the Safety Data Sheet (SDS) provided for the product. Chemical analysis and/or reverse engineering of any kit or its components is strictly prohibited without