

Catalogue No.

AB0313-100

Qty:

300 µg

Anti-ITGB2

Source: Goat

General description: Goat polyclonal antibody to ITGB2. The integrin beta chain combined with multiple different alpha chains form different integrin heterodimers. Integrins are integral cell-surface proteins that act as cell-surface mediated signaling and participate in cell adhesion.

Alternative names: CD18, LAD, LCAMB, LFA-1, MAC-1, MF17, MFI7 antibody

Form: Polyclonal antibody supplied as a 100 µl (3 mg/ml) aliquot in PBS, 20% glycerol and 0.05% sodium azide.

Immunogen: Recombinant peptide derived from within residues 140 aa to the N-terminus of human ITGB2 produced in E. coli.

Specificity: Detects endogenous levels of ITGB2 using Jurkat cell line by Western blot.

Reactivity: Reacts with Human, Rat, Mouse, Monkey and Canine proteins

Sample	WB	IHC (F)	IHC (P)	IF	ELISA
Human	+++	ND	ND	ND	ND
Rat	+++	ND	ND	ND	ND
Mouse	+++	ND	ND	ND	ND
Monkey	+++	ND	ND	ND	ND
Canine	+++	ND	ND	ND	ND

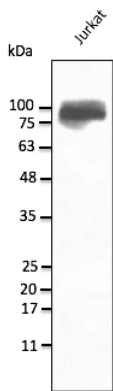
+++ excellent, ++ good, + poor, ND not determined

Usage:

WB: 1:500-1:2,000

Storage: Store at -20 C for long-term storage. Store at 2-8 C for up to one month.

Special instructions: Avoid freeze/thaw cycles..



Anti-ITGB2 Ab at 1/1,000 dilution; lysates at 50 μ g per lane; rabbit polyclonal to goat IgG (HRP) at 1/10,000 dilution;

For research use only, not for diagnostic use

SICGEN's Proprietary Immunogen Policy

In order to produce high specific antibodies SICGEN has invested a lot of time and effort into selecting immunogen sequences. SICGEN has decided to protect this information by not publishing it on the website. However, these sequences are available on request.