

Catalogue No.

AB0348-100

Qty:

300 µg

Anti-HSP20**Source:** Goat**General description:** HSP20, a heat shock protein, that plays a role in in cell traction and Plasmodium motility.**Alternative names:** Small heat shock protein antibody.**Form:** Polyclonal antibody supplied as a 100 µl (3 mg/ml) aliquot in PBS, 20% glycerol and 0.05% sodium azide.**Immunogen:** Affinity purified recombinant fusion protein HSP20 from Plasmodium and produced in E. coli.**Specificity:** In lysates of transfected cells with the plasmid containing the sequence used, detects the fusion protein by Western blot.**Reactivity:** Reacts with Plasmodium proteins

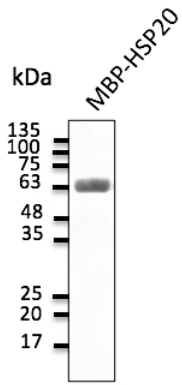
Sample	WB	IHC (F)	IHC (P)	IF	ELISA	IEM
Plasmodium	+++	ND	ND	ND	ND	ND

+++ excellent, ++ good, + poor, ND not determined

Usage:

WB: 1:500-1:2,000

Storage: Store at -20 C for long-term storage. Store at 2-8 C for up to one month.**Special instructions:** Avoid freeze/thaw cycles..



Anti-HSP20 Ab at 1:2,000 dilution; 30 ng of protein per lane; chicken polyclonal to goat IgG conjugated to HRP (AB1125) at 1/10,000 dilution;

For research use only, not for diagnostic use

SICGEN's Proprietary Immunogen Policy

In order to produce high specific antibodies SICGEN has invested a lot of time and effort into selecting immunogen sequences. SICGEN has decided to protect this information by not publishing it on the website. However, these sequences are available on request.