

Catalogue No.

AB0383-100

Qty:

300 µg

Anti-Asense

Source: Goat

General description: Asense protein is a Drosophila neural precursor gene that is capable of initiating sense organ formation.

Alternative names: AS-C T8, AS-C T8ase, as-T8, AS-T8, ASC, ascT8, Ase, bHLHc28, CG3258; Dmel\CG3258, EG:165H7.2, sc/T8, T1, T1a, T1A, T8 antibody.

Form: Polyclonal antibody supplied as a 100 µl (3 mg/ml) aliquot in PBS, 20% glycerol and 0.05% sodium azide. This antibody is epitope-affinity purified from goat antiserum.

Immunogen: Purified recombinant peptide derived from within residues 254 aa to the C-terminus of Asense produced in E. coli.

Specificity: Detects endogenous levels of Asense by IF.

Reactivity: Reacts with Fruit fly proteins

Sample	WB	IHC (F)	IHC (P)	IF	ELISA
Fruit fly	+++	ND	ND	+++	ND

+++ excellent, ++ good, + poor, ND not determined

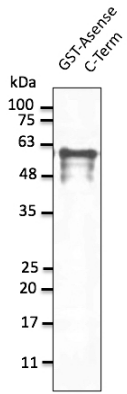
Usage:

WB: 1:500-1:2,000

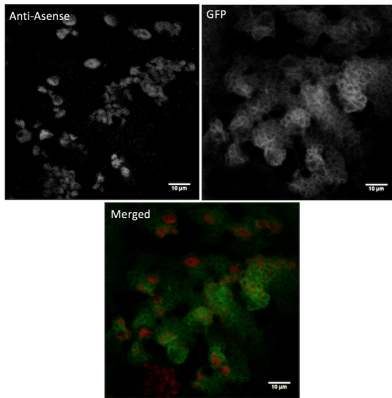
IF: 1:100-1:1,000

Storage: For continuous use, store at 2-8 C for one-two days. For extended storage, store in -20 C freezer. Working dilution samples should be discarded if not used within 12 hours.

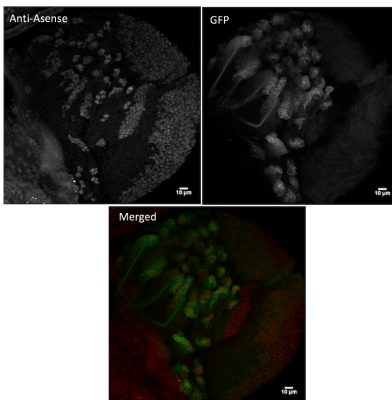
Special instructions: The antibody solution should be gently mixed before use..



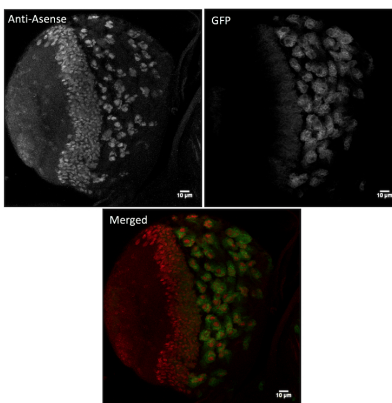
Anti-Asense Ab at 1/1,000 dilution; protein at 40 ng per lane; chicken polyclonal to goat IgG (HRP) at 1/10,000 dilution;



Immunofluorescence – anti-Asense Ab in fly cells at 1/1000 dilution; InsGAL4 UASCD8 GFP wandering L3; cells were fixed with 4% of PFA;



Immunofluorescence – anti-Asense Ab in fly cells at 1/1000 dilution; InsGAL4 UASCD8 GFP wandering L3; cells were fixed with 4% of PFA;



Immunofluorescence – anti-Asense Ab in fly cells at 1/1000 dilution; InsGAL4 UASCD8 GFP wandering L3; cells were fixed with 4% of PFA;

For research use only, not for diagnostic use

In order to produce high specific antibodies SICGEN has invested a lot of time and effort into selecting immunogen sequences. SICGEN has decided to protect this information by not publishing it on the website. However, these sequences are available on request.