

Catalogue No.

AB0386-100

Qty:

300 µg

Anti-NSP2 (SARS-CoV-2)

Source: Goat

General description: Non-structural protein 2 (Nsp2) is part of the multifunctional protein replicase polyprotein 1ab that is involved in the transcription and replication of viral RNA. Nsp2 may play a role in the modulation of host cell survival signalling pathway by interacting with proteins that maintain the functional integrity of the mitochondria and protect the cells from various stresses (PHB and PHB2).

Alternative names: Nsp2 SARS Coronavirus-2 antibody.

Form: Polyclonal antibody supplied as a 100 µl (3 mg/ml) aliquot in PBS, 20% glycerol and 0.05% sodium azide. This antibody is epitope-affinity purified from goat antiserum.

Immunogen: Affinity purified recombinant fusion protein using the C-terminal of Nsp2 (residues 480 to stop) and produced in E. coli.

Specificity: In lysates of transfected cells with the plasmid containing the sequence used, detects the fusion protein by Western blot.

Reactivity: Reacts with Transfected cells proteins

Sample	WB	IHC (F)	IHC (P)	IF	ELISA
Transfected cells	+++	ND	ND	ND	ND

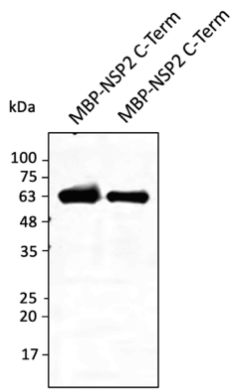
+++ excellent, ++ good, + poor, ND not determined

Usage:

WB: 1:500-1:2,000

Storage: For continuous use, store at 2-8 C for one-two days. For extended storage, store in -20 C freezer. Working dilution samples should be discarded if not used within 12 hours.

Special instructions: The antibody solution should be gently mixed before use..



Anti-NSP2 protein Ab at 1/2,500 dilution; lane with 30 ng of recombinant fusion protein (480 aa - stop); rabbit polyclonal to goat IgG (HRP) at 1/10,000 dilution;

For research use only, not for diagnostic use

SICGEN's Proprietary Immunogen Policy

In order to produce high specific antibodies SICGEN has invested a lot of time and effort into selecting immunogen sequences. SICGEN has decided to protect this information by not publishing it on the website. However, these sequences are available on request.