

Catalogue No.

AB200405-200

Qty:

500 µg

Anti-Goat IgG, DyLight®405

Source: Chicken

General description: Chicken polyclonal antibody to goat IgG conjugated to DyLight®405.

Alternative names: Immunoglobulin Y antibody.

Form: Polyclonal antibody supplied as a 200 µl (2.5 mg/ml) aliquot in PBS, 20% glycerol, 0.05% ProClin® and 0.05% sodium azide. This antibody is epitope-affinity purified from yolk egg.

Immunogen: Full goat IgG affinity purified from domestic goat (*Capra hircus*) serum using protein G. Purity >95% by SDS-PAGE.

Specificity: Using serum samples detects goat IgG by Western blot. Reduced cross-reactivity to other species.

Reactivity: Reacts with Goat proteins

Sample	WB	IHC (F)	IHC (P)	IF	ELISA	IEM
Goat	+++	ND	ND	+++	ND	ND

+++ excellent, ++ good, + poor, ND not determined

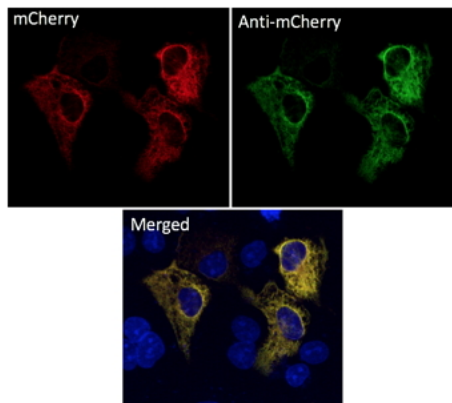
Usage:

WB: 1:2,000-1:10,000

IF: 1:100-1:1,000

Storage: Store at -20 C for long-term storage. Store at 2-8 C for up to one month.

Special instructions: Avoid freeze/thaw cycles..



Immunofluorescence – anti-mCherry Ab using COS7 cells transfected with mCherry-TUB1B; cells were fixed with methanol, 1st Ab anti-mCherry at 1/250 and 2nd Ab anti-goat IgY conjugated to DyLight®405 at 1/500;

For research use only, not for diagnostic use

SICGEN's Proprietary Immunogen Policy

In order to produce high specific antibodies SICGEN has invested a lot of time and effort into selecting immunogen sequences. SICGEN has decided to protect this information by not publishing it on the website. However, these sequences are available on request.