

Catalogue No.

AB27550-200

Qty:

500 µg

Anti-Mouse IgG, DyLight®550

Source: Goat

General description: Goat polyclonal antibody to mouse IgG conjugated to DyLight®550.

Alternative names: Immunoglobulin G antibody.

Form: Polyclonal antibody supplied as a 200 µl (2.5 mg/ml) aliquot in PBS, 20% glycerol, 0.05% ProClin® and 0.05% sodium azide.

Immunogen: Full mouse IgG affinity purified from mouse (*M. musculus*) serum using protein G. Purity >95% by SDS-PAGE.

Specificity: Using serum samples detects mouse IgG by Western blot. Reduced cross-reactivity to other species.

Reactivity: Reacts with Mouse proteins

Sample	WB	IHC (F)	IHC (P)	IF	ELISA	IEM
Mouse	+++	ND	ND	+++	ND	ND

+++ excellent, ++ good, + poor, ND not determined

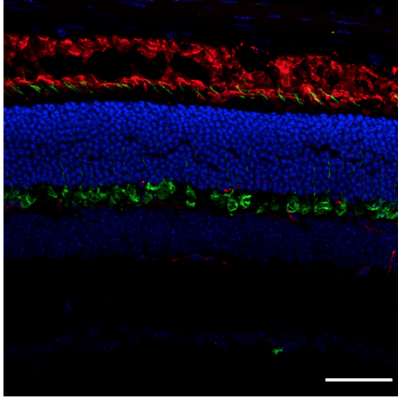
Usage:

WB: 1:2,000-1:10,000

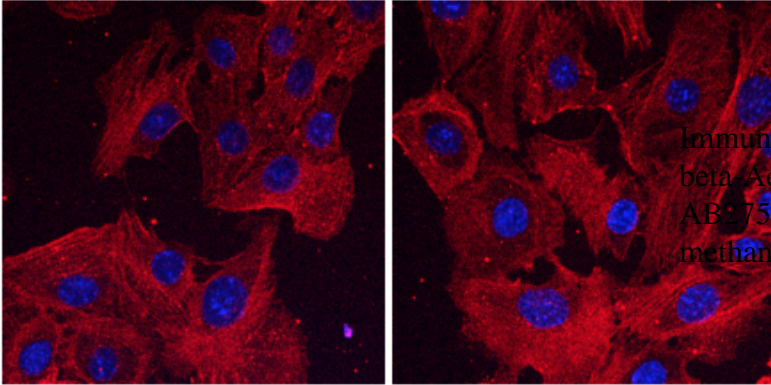
IF: 1:100-1:1,000

Storage: Store at -20 C for long-term storage. Store at 2-8 C for up to one month.

Special instructions: Avoid freeze/thaw cycles..



Immunostaining - C57BL/6J mouse retina labeled with: Green- 1st Ab Cone Arrestin (1/1,000); 2nd Ab goat anti-rat (AB28488, 1/1,000), Red- 1st Ab Rhodopsin (1/1,000); 2nd Ab goat anti-mouse (AB27550, 1/1,000), Blue- Nuclear staining(DAPI), scale bar = 40 um;



Immunofluorescence using hCEC cells, 1st Ab (anti-beta-Actin at 1/250) and 2nd Ab (anti-mouse AB27550 at 1/1,000); cells were fixed with methanol;

For research use only, not for diagnostic use

SICGEN's Proprietary Immunogen Policy

In order to produce high specific antibodies SICGEN has invested a lot of time and effort into selecting immunogen sequences. SICGEN has decided to protect this information by not publishing it on the website. However, these sequences are available on request.