

**Catalogue No.**

AB307633-100

**Qty:**

500 µg

## Anti-Chicken IgY, DyLight®633

**Source:** Goat

**General description:** Goat polyclonal antibody to chicken IgY conjugated to DyLight®633.

**Alternative names:** Immunoglobulin G antibody.

**Form:** Polyclonal antibody supplied as a 200 µl (2.5 mg/ml) aliquot in PBS, 20% glycerol, 0.05% ProClin® and 0.05% sodium azide. This antibody is epitope-affinity purified from goat serum.

**Immunogen:** Full chicken IgY affinity purified from domestic chicken (*G. gallus*) egg yolk. Purity >95% by SDS-PAGE.

**Specificity:** Using serum samples detects chicken IgY by Western blot. Reduced cross-reactivity to other species.

**Reactivity:** Reacts with Chicken proteins

Sample	WB	IHC (F)	IHC (P)	IF	ELISA	IEM
Chicken	+++	ND	ND	+++	ND	ND

+++ excellent, ++ good, + poor, ND not determined

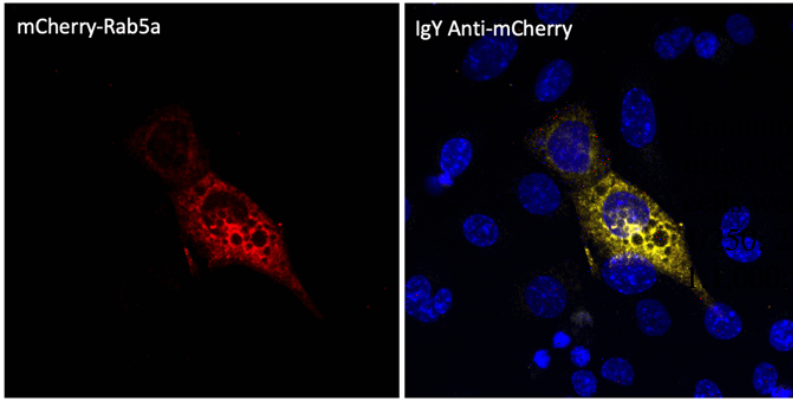
**Usage:**

WB: 1:2,000-1:10,000

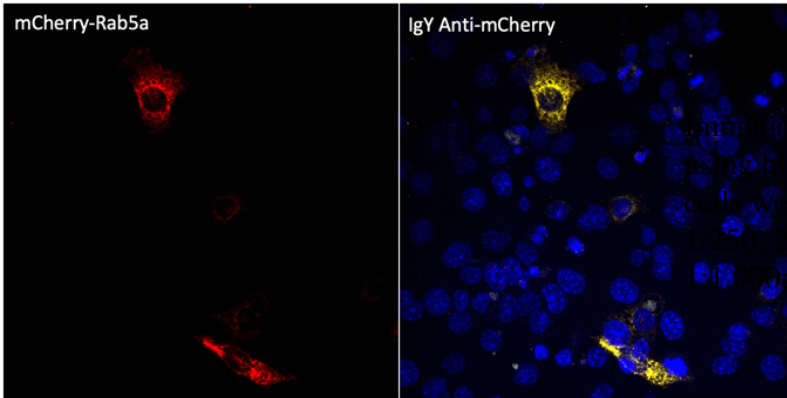
IF: 1:100-1:1,000

**Storage:** Store at -20 C for long-term storage. Store at 2-8 C for up to one month.

**Special instructions:** Avoid freeze/thaw cycles..



Fluorescence – anti-mCherry Ab (AB9770)  
 EC cells transduced with mCherry-Rab5a;  
 cells were fixed with methanol and mCherry Ab at  
 50°C and Ab goat anti-IgY (AB307633) at



Fluorescence – anti-mCherry Ab (AB9770)  
 EC cells transduced with mCherry-Rab5a;  
 cells were fixed with methanol and mCherry Ab at  
 50°C and Ab goat anti-IgY (AB307633) at

For research use only, not for diagnostic use

**SICGEN's Proprietary Immunogen Policy**

In order to produce high specific antibodies SICGEN has invested a lot of time and effort into selecting immunogen sequences. SICGEN has decided to protect this information by not publishing it on the website. However, these sequences are available on request.