



Murine Anti-C4b Binding Protein

Clone GMA-036

In blood, C4b-binding protein (C4bp) is composed of six or seven identical α -chains (Mr 70,000) and, in most molecules, contains an additional β -chain (Mr 45,000). Approximately 60% of plasma protein S is complexed to C4bp in blood. GMA-036 binds human C4bp in solid-phase ELISA. The antibody can also be used for immunopurification of C4bp from plasma.

Description

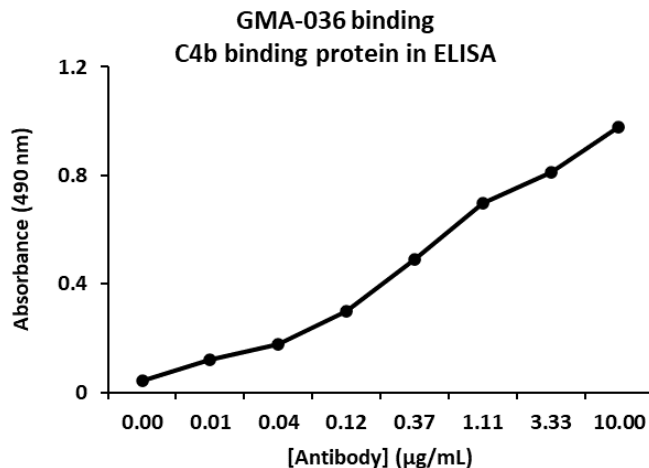
Antibody Source:	mouse monoclonal, IgG ₁
Antigen Species Bound:	human
Specificity:	C4b-binding protein
Immunogen:	human C4b-binding protein

Formulation and Storage

Purity:	Purified by protein G affinity chromatography from serum-free cell culture supernatant.
Product Formulation:	Lyophilized from a ≥ 1 mg/ml solution in 20 mM NaH ₂ PO ₄ 0.15 M NaCl, 1.0% (w/v) mannitol, pH 7.4. Concentration determined by absorbance measurement at 280 nm and using an extinction coefficient of 1.4 ($\epsilon_{0.1\%}$).
Reconstitution:	Reconstitute with deionized water.
Storage:	Store lyophilized or reconstituted and aliquoted material at -20°C for prolonged periods. Avoid freeze-thaw cycles. Alternatively, add 0.02% (w/v) sodium azide to reconstituted solution and store at 4°C.
Country of Origin:	USA
Size Options:	0.1 mg or 0.5 mg

Applications

Working Concentration:	Approximately 1-5 μ g/ml. Researcher should titer antibody in specific assay.
ELISA:	Binds human C4b-binding protein.
Antigen Purification:	Antibody binds C4bp-Protein S complex in plasma.



References

- [1] D.K. Ho, S. Ram, K.L. Nelson, P.J. Bonthuis, A.L. Smith. IgtC Expression Modulates Resistance to C4b Deposition on an Invasive Nontypeable Haemophilus Influenzae. (2007). *J Immunology*. 178:1002-1012.
- [2] D. Pilling, C.D. Buckley, M. Salmon, R.H. Gomez. Inhibition of Fibrocyte Differentiation by Serum Amyloid P. (2003). *J Immunology*. 171:5537-5546.